

# TORQUE MEASUREMENT

## SIMPLY MEASURE THE TORQUE UNDER INDUSTRIAL SCREWING MACHINES



Machines de contrôle qualité  
Industrie & Packaging

### FUNCTION

Measuring the unscrewing torque of packaged sample caps can reach limitations. Checking the tightening torque, verified directly under the screwdriver, is useful in the following cases:

- Know the real value of the static torque applied to the products to be screwed.
- Check the repeatability of the screwing machines
- Provide additional information to diagnose the various problems of your packaged products (sealing, screwing, etc.).
- Check that the unscrewing torque problems are not related to the machine.
- Collect preventive maintenance and process control data



Calibration  
certificate  
ISO6789

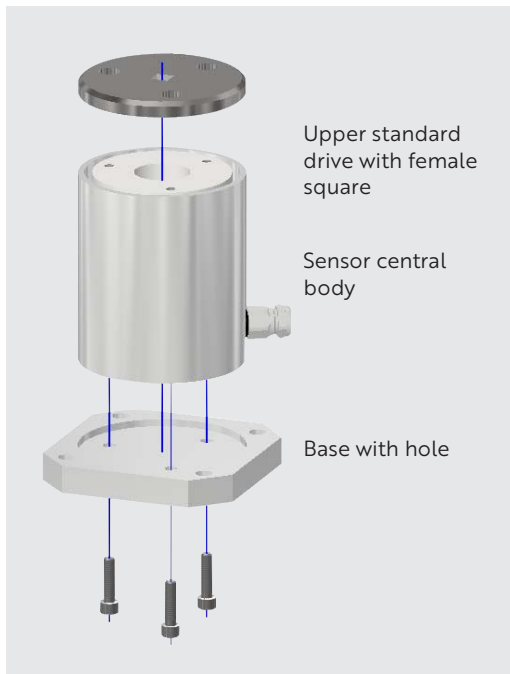
### TECHNICAL SPECIFICATIONS

Type of sensor	Self-stabilizing reinforced static torque sensors
Capacity (N.m)	0,5/ 1/3/5/10/25
Units	N.m / lbf.inch/ N.cm / Kgf.cm
Dimensions	see outline below
Weight (sensor kit)	700 g
Sampling rate	5000 Hz
Accuracy	0,1 % FS
Resolution	0,001 N.m
Autodiagnostic	Sensor offset indication
Safe overload	150 %
Standard drive	Female square 1/4"
Calibration	Programmable calibration overrun reminder
Power supply	220 V / 50-60 Hz

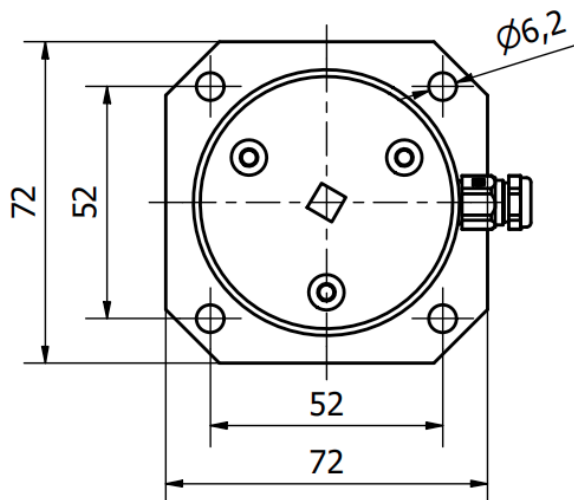
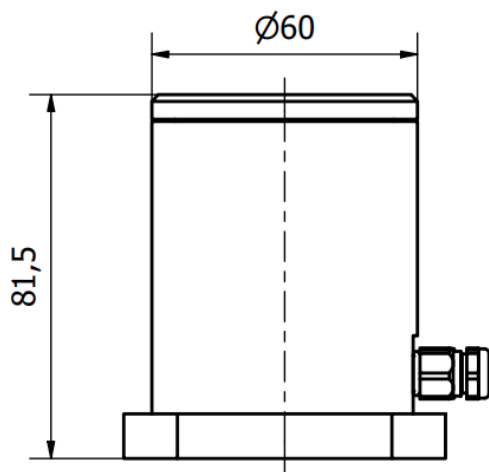
### SYSTEM DESCRIPTION:

- Measurement Console XA-m
- Embedded sensor with a capacity from 0.5 to 25 N.m
- Upper standard drive with female
- Base with hole drilling
- Central body of the sensor casing





### DIMENSIONS FOR FEMALE SQUARE 1/4"



### BENEFITS

● Possible adaptations for the top drive of the sewing machine:

- Other dimension of squares,
- End caps
- Dummy caps

● Possible adaptations for the plinth :

- Customized base for adaptation of buckets or specific dimensions,
- Dummy caps





### PRODUCT CONTENT:

- XA-m measurement console
- Sensor Kit
- User manual
- Calibration certificate linked to french COFRAC
- Electric charger
- Transport case

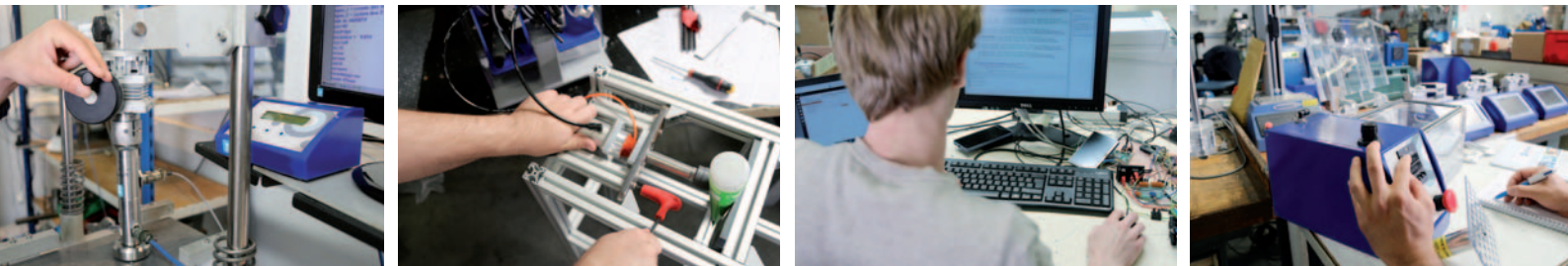
### OPTIONS

Printer
Extended wires
Additional sensors
Dummy caps
Drive adapters

---

## ACRN A GLOBAL OFFER

*for your packaging quality controls*



### Calibration and annual maintenance

ACRN is equipped with a metrology laboratory.

### Setting up tests, choice of materials, state of the art, work on repeatability

we can advise you according to your needs (tecnology, budget, ergonomics).

### Leak testing and dynamometric testing

Our skills and equipment for leak testing and dynamometric testing for packaging

---

### Major manufacturers have trusted us for many years

